


**INR**
**7 February 2011**

	Contract	S 2	S1	Close	R 1	R2	Recommendation
<b>USDINR</b>	Feb 2011	45.45	45.63	45.75	45.90	46.11	SELL RANGE 45.90/45.95 TP 45.45 SL 46.12
<b>EURINR</b>	Feb 2011	61.50	61.93	62.34	62.75	63.40	SELL RANGE 62.66/62.75 TP 61.90 SL 63.15
<b>GBPINR</b>	Feb 2011	73.22	73.49	73.7625	74.10	74.50	SIDEWAYS
<b>JPYINR</b>	Feb 2011	55.62	55.87	55.96	56.22	56.60	SELL RANGE 56.15/56.22 TP 55.60/55.30 SL 56.40

INDICATORS	LAST	1 week ago	% Change
LIBOR 1Mth	0.2628	0.2600	1.06
LIBOR 3Mth	0.3115	0.3044	2.34
MIBOR 1Mth	0.9100	0.8800	3.41
MIBOR 3Mth	1.0900	1.0600	2.83
U.S. 5Yr Bond Yield	2.2601	1.9144	18.06
U.S. 10Yr Bond Yield	3.6356	3.3214	9.46
India 5Yr Bond Yield	#N/A N/A	#N/A N/A	#VALUE!
India 10Yr Bond Yield	8.2000	8.1190	1.00
Reference rate	45.6400	45.7400	-0.22
CBLO rate	6.4263	5.7833	11.12
Call Rate	6.7200	6.2500	7.52

ASIAN/INR	LAST	1 week ago	% Change
Indian rupee	45.6000	45.7563	-0.34
Chinese Yuan	6.9250	6.9470	-0.32
Hongkong Dollar	5.8570	5.8730	-0.27
Indonesian Rupiah	0.5071	0.5066	0.10
Myanmar Ringgit	15.0520	14.9738	0.52
Philippines Peso	1.0415	1.0369	0.44
Singapore Dollar	35.7664	35.6090	0.44
S Korean Won	0.4133	0.4108	0.62
Taiwan Dollar	1.5724	1.5772	-0.30
Thailand Baht	1.4806	1.4746	0.41

Pair	LAST	1 week ago	% Change
USDINR	45.64	45.74	-0.22
GBPINR	73.67	72.73	1.29
JPYINR 100	55.91	55.34	1.03
EURINR	62.24	62.73	-0.78

CROSS	LAST	1 week ago	% Change
USDINR	45.60	45.76	-0.34
EUROINR	62.15	62.83	-1.09
GBPINR	73.45	72.58	1.20
JPY (100) Futures	55.46	55.73	-0.48
MYR	15.05	14.97	0.52
SGD	35.77	35.61	0.44

CROSS	LAST	1 week ago	% Change
INR SPOT	45.60	45.76	-0.34
MCX-SX Futures	45.75	45.99	-0.53
NSE Futures	45.75	46.00	-0.53
1 Month NDF	45.84	46.12	-0.61
1 Month FORWA	45.82	46.00	-0.40
NIFTY	5395.75	5512.15	-2.11
SENSEX	18008.15	18395.97	-2.11



## USDINR



**TECHNICAL SNAPSHOT:** The spot Indian rupee closed the week on a weak note closing lower at 45.59 levels compared to its previous week closing at 45.7450 levels shedding about 0.34% for the week. Even though the rupee managed to make a new high at 46.0100 levels on an intraday basis however it could not manage to sustain above the previous week's high and closed significantly lower suggesting strong resistance at those levels.

The weekly chart depicts the rupee is getting closer to the downtrend channel resistance zone (near 46.11/46.22 range) and hence some indecision among traders to take a fresh long position closer to those levels. The weekly chart candlestick has formed a dark cloud cover bearish pattern suggesting a possible short term reversal from the current levels which could pull down the rupee to 45.40/45.33 levels.

The weekly trend indicator average directional index is currently trading at 17.4 levels suggesting sideways trend. The pivotal point for the week is at 45.71 where it could see some resistance if breached could test 45.89 levels. The support is at 45.3300(50% retracement of the Fibonacci range 44.63-46.01) and then 45.1700(61.8% of the Fibonacci range 44.63 -46.01) levels.

**We recommend selling the spot rupee near 45.7100 levels for a target of 45.3300 levels and a stop loss above 45.90 levels**

## DOLLAR INDEX



Exchange	Contract	S 2	S1	Close	R 1	R2	Recommendation
Dollar Index	SPOT	77.18	77.75	78.044	78.6	79.20	Buy RANGE 77.75/77.80 TP 78.72/79.09 SL 77.40



**TECHNICAL SNAPSHOT:** The dollar index closed the week at 78.044 levels slightly lower compared to the previous week closing. After trending lower during the first few days of the week it recouped the losses to close flat for the week. The weekly chart candlestick depicts a hammer formation indicating a possibility of a short term reversal and also a short term bottom could be in place .Hence we could prices moving higher from the current levels. The weekly pivot point is at 77.75 levels which could act as strong support for the dollar index this week as pricing are trading far higher than the pivot level.

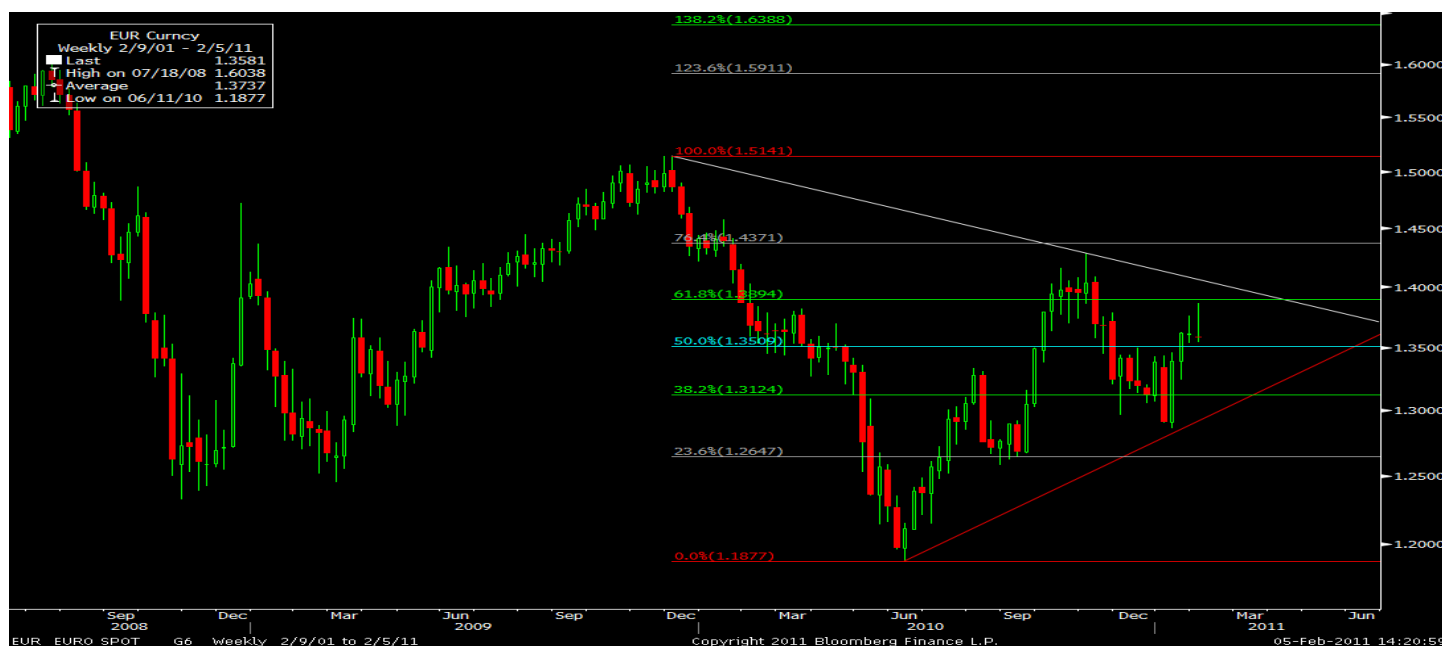
The dollar index has resistance at 78.565 levels (38.2% retracement of the fibonacci range76.8-81.31) and then 79.09 levels (50% retracement level of the fibonacci range 76.8-81.31)

**We recommend buying the dollar in the range of 77.75/77.80 for a target of 78.70 and then 79.09 levels and a stop loss of 77.40 levels**



## EUR / USD- SPOT

Exchange	Contract	S2	S1	Close	R 1	R2	Recommendation
EUR/USD	SPOT	1.336	1.348	1.3583	1.370	1.3861	SELL RANGE 1.365/1.37 TP 1.348 SL 1.376



**TECHNICAL SNAPSHOT:** The Euro closed the week lower compared to the previous week. After rallying up initially to test a new high at 1.3861 levels the euro retraced largely from the new high to close at 1.3583 levels shedding about 0.1942% for the week. The weekly chart candlestick depicts a long upper shadow Doji formation suggesting trader's inability to push Prices higher from those levels (here 1.3861) indicating a possibility of a short term reversal. Based on the Fibonacci principle the

Euro has retraced to 61.8% level of the range (1.5144 and 1.2111) on the weekly chart and we could expect some resistance and hence prices could correct further if the recent high is not taken out.

However on the daily chart the Euro is still in a long term uptrend as it is trading above its 200 day exponential moving average level of 1.3366 which also could act as strong support if prices correct further from the current levels. The weekly pivotal point is at 1.3700 levels and we could expect some resistance at those levels. Support is at 1.348 levels which is the 38.2% retracement of the Fibonacci range (1.287-1.3861) and then 1.336 levels which is the 50% retracement of the Fibonacci range (1.287-1.3861)

**We recommend selling in the range of \$1.365/\$1.37 levels targeting 1.348 and then 1.3366 levels with a stop loss above 1.376 levels**

CROSS	LAST	1 week ago	% Change
FTSE 100 INDEX	5997.38	5881.37	1.97
DAX INDEX	7216.21	7102.80	1.60
GBP1M BGN CURRENCY	1.61	1.59	1.58
GBP3M BGN CURRENCY	1.61	1.58	1.57



## GBP/USD- SPOT

Exchange	Contract	S 2	S1	Close	R 1	R2	Recommendation
GBP/USD	SPOT	1.5930	1.6070	1.6107	1.6277	1.6530	BUY RANGE 1.5960/1.6007 TP 1.6277 SL 1.5930



**TECHNICAL SNAPSHOT:** The pound had a bullish closing for the week compared to its prior week close. It closed higher by 1.54% over the previous week. During the week it tested a high of 1.6277 levels but has faced significant selling pressure at those levels. The weekly chart candlestick depicts a bullish engulfing formation indicating bullishness in the short term. The charts also suggest the pound is trading near the upper end of the trading Bollinger band level which is at 1.6250 levels. However the pound still holds the potential to test new highs on a breach of a the recent high level of 1.6277 and then 1.6530 level

The weekly average directional movement indicator is currently trading at 21.433 levels (DMI+ is at 27 and DMI- is at 14 ) suggesting a possibility of a strong up trend build up. However a mild correction cannot be ruled out before it starts to trend higher. The relative strength index is at 58 levels indicating potential for further up move from the current levels. Support for the pound is at 1.6070 and then 1.5930 levels (38.2% of Fibonacci range 1.5344-1.6277)

**We recommend buying the pound in the range of 1.5960/1.6007 levels targeting 1.6277 and then 1.65 levels with a stop loss below 1.5920 levels**

CROSS	LAST	1 week ago	% Change
FTSE 100 INDEX	5997.38	5881.37	1.97
DAX INDEX	7216.21	7102.80	1.60
GBP1M BGN CURRENCY	1.61	1.59	1.58
GBP3M BGN CURRENCY	1.61	1.58	1.57



## USD/JPY-SPOT

Exchange	Contract	S 2	S1	Close	R 1	R2	Recommendation
USD/JPY	SPOT	81.35	81.91	82.17	82.70	83.14	BUY RANGE 81.9/82.06 TP 82.70/83.14 SL 81.30



**TECHNICAL SNAPSHOT:** The yen closed higher this week gaining nearly about 0.10% over the prior week. During the week it tested a high of 82.47 and a low of 81.08 levels. The weekly chart candlestick candle depicts a long legged doji pattern suggesting a short term reversal on cards (assuming the weekly low level of 81.08 levels is not breached on a closing basis). The pivotal point for the week is at 81.91 levels where it could find support as prices are trading much higher from the pivotal point now.

Resistance is at 82.71(50% retracement of the Fibonacci range 84.5 -80.9) and then 83.14 levels (61.8% retracement of the Fibonacci range 84.5-80.9) .Support is at 81.9 and then 81.35 levels

**We recommend buying they yen in the range of 81.90/82.06 for a target of 82.70 and then 83.14 with a stop loss below 81.30**

CROSS	LAST	1 week ago	% Change
NIKKIE INDEX	10543.52	10360.34	1.77
JPY1M BGN CURRENCY	82.16	82.11	0.07
JPY3M BGN CURRENCY	82.12	82.06	0.07



## ECONOMIC DATA RELEASES

Date	Time	Region	Event	Period	Survey	Prior
02/07/2011	11:00	IN	FY11 Annual GDP Constant YoY%	1Q A	8.60%	8.00%
02/07/2011	16:30	GE	Factory Orders MoM (sa)	DEC	-1.50%	5.20%
02/08/2011	05:20	JN	Current Account Balance YOY%	DEC	24.20%	-15.70%
02/08/2011	16:30	GE	Industrial Production MoM (sa)	DEC	0.20%	-0.70%
02/09/2011	08:00	CH	China HSBC Services PMI	JAN	--	53.1
02/09/2011	12:30	GE	Exports SA (MoM)	DEC	1.00%	0.50%
02/09/2011	12:30	GE	Imports SA (MoM)	DEC	0.80%	4.10%
02/09/2011	12:30	GE	Current Account (EURO)	DEC	14.0B	12.0B
02/09/2011	12:30	GE	Trade Balance	DEC	12.0B	12.9B
02/10/2011	05:20	JN	Machine Orders (MoM)	DEC	5.00%	-3.00%
02/10/2011	07:30	CH	Trade Balance (USD)	JAN	\$10.20B	\$13.10B
02/10/2011	07:30	CH	Exports YoY%	JAN	22.40%	17.90%
02/10/2011	07:30	CH	Imports YoY%	JAN	21.90%	25.60%
02/10/2011	15:00	UK	Industrial Production (MoM)	DEC	0.50%	0.40%
02/10/2011	15:00	UK	Manufacturing Production (MoM)	DEC	0.40%	0.60%
02/10/2011	17:30	UK	BOE ANNOUNCES RATES	10-Feb	0.50%	0.50%
02/10/2011	19:00	US	Initial Jobless Claims	5-Feb	410K	415K
02/10/2011	19:00	US	Continuing Claims	29-Jan	3900K	3925K
02/10/2011	20:30	US	Wholesale Inventories	DEC	0.80%	-0.20%
02/11/2011	00:30	US	Monthly Budget Statement	JAN	-\$60.0B	--
02/11/2011	11:00	IN	Industrial Production YoY	DEC	1.60%	2.70%
02/11/2011	12:30	GE	Consumer Price Index (MoM)	JAN F	-0.50%	-0.50%
02/11/2011	12:30	GE	Consumer Price Index (YoY)	JAN F	1.90%	1.90%
02/11/2011	12:30	GE	Wholesale Price Index (MoM)	JAN	--	1.80%
02/11/2011	12:30	GE	Wholesale price Index (YoY)	JAN	--	9.50%
02/11/2011	19:00	US	Trade Balance	DEC	-\$40.2B	-\$38.3B
02/11/2011	20:25	US	U. of Michigan Confidence	FEB P	75	74.2

To unsubscribe please mail us at [currencyresearch@karvy.com](mailto:currencyresearch@karvy.com)

### Disclaimer

The report contains the opinions of the author that are not to be construed as investment advice. The author, directors and other employees of Karvy, and its affiliates, cannot be held responsible for the accuracy of the information presented herein or for the results of the positions taken based on the opinions expressed above. The above-mentioned opinions are based on the information which is believed to be accurate and no assurance can be given for the accuracy of this information. There is risk of loss in trading in currency derivatives. The author, directors and other employees of Karvy and its affiliates cannot be held responsible for any losses in trading.

Currency derivatives trading involve substantial risk. The valuation of the underlying may fluctuate, and as a result, clients may lose their entire original investment. In no event should the content of this research report be construed as an express or an implied promise,



# Currency Weekly



A Weekly Comprehensive Report on Currency