

Mentha Oil Weekly



Technical Recommendation:

| Commodity | Exchange | Contract | Recommendations |
|------------|----------|----------|--------------------------|
| Mentha Oil | MCX | Jan-11 | Trading Range 1285 -1348 |

Spot Price Performance: (D/D)

| Date | Chandausi | Moradabad | Barabanki | MCX Spot- Oil | MCX Spot- Flakes |
|------------|-----------|-----------|-----------|---------------|------------------|
| 12-12-2011 | 1480 | 1485 | 1425 | 1493.6 | 1598.8 |
| 13-12-2011 | 1470 | 1475 | 1415 | 1496 | 1599.7 |
| 14-12-2011 | 1475 | 1480 | 1420 | 1502.4 | 1603.4 |
| 15-12-2011 | 1465 | 1460 | 1420 | 1481.5 | 1584.5 |
| 16-12-2011 | 1467 | 1470 | 1405 | 1488.6 | 1589.9 |

Note: Since Uttar Pradesh is the major growing state in India, spot prices have taken from various districts of UP

Review:

Mentha oil January futures witnessed very choppy trade during last week. Futures and spot market both started the week on lower note on extended losses from last week. Stable to higher arrivals across the spot market kept the prices on weaker note. However, later on prices took smart recovery during the week on fresh buying due to switching over from December contract to far month contract. Nonetheless, overall trend remained down side biased due to sluggish activity at export front. However, futures recovered a bit on lower level buying towards the closing of the week and futures ended the week on marginally lower note.

Last week's Price Movement:

| Contract | Open | High | Low | Close | % Change | Volume | % Change | Open Interest | % Change |
|----------|--------|--------|--------|--------|----------|--------|----------|---------------|----------|
| Dec-11 | 1321.4 | 1329.5 | 1286.3 | 1311 | -0.88 | 14006 | -28.65 | 3428 | -9.58 |
| Jan-12 | 1307 | 1323.9 | 1287 | 1311.4 | -0.12 | 3930 | 14.41 | 2662 | 2.23 |
| Feb-12 | 1297 | 1310.9 | 1282.2 | 1304 | 0.16 | 550 | -25.89 | 630 | 27.17 |

Note: Prices are updated till 11.00 am. on Saturday

Outlook

In the coming week, mentha oil prices are projected to trade on slightly positive note during early trading sessions of the week. Continued buying in far month contracts is likely to support the prices. Arrivals at spot market of Sambhal are also reported steady at 50-60 drums a day. According to trade sources, though demand good but exporters are buying at lower prices from small mandis near Barabanki which is limiting upsurge in prices. Therefore, monopoly from exporter's side might create some pressure on prices later in the week.

- According to trade sources, around 70% of the total produce of this season has arrived at spot market

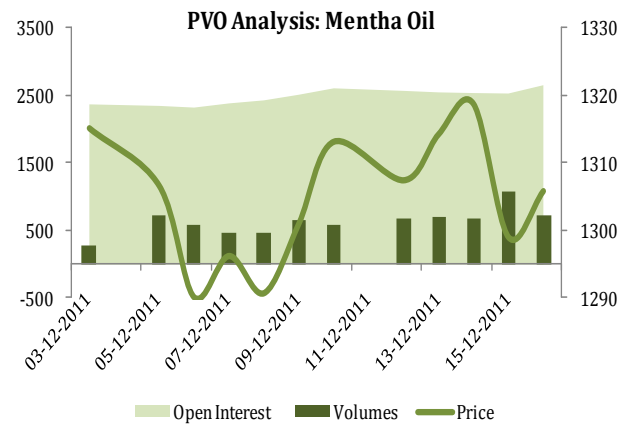
Mentha Oil Weekly



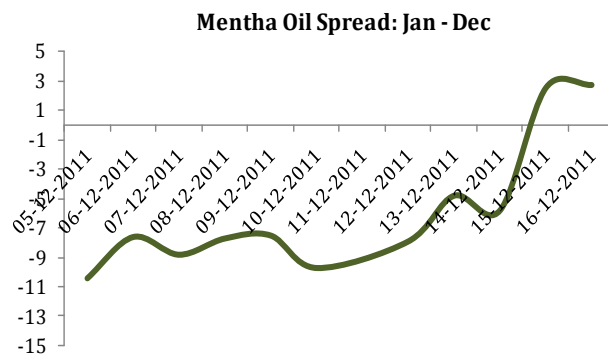
- According to data released by Spices board, mint product (mentha oil & flakes) exports during April- October, 2011 have reported a fall of 4% to 9150 tons as compared to same period last year
- According to data released by Spices Board, mentha export for year 2011-12 is targeted around 17,750 tonnes against estimates exports of 17,450 tonnes during 2010-11

Derivative Analysis (Jan - 11)

Mentha Oil December contact, prices have ended on marginally lower note showing recovery; while volumes and open interest have increased. It is a good indication that a fresh buying at lower level can be seen in near term but with limited gains.



Calendar Spread



| Spread Matrix | | | |
|---------------|--------|--------|--------|
| | Dec-11 | Jan-12 | Feb-12 |
| Dec-11 | 0 | | |
| Jan-12 | 0.4 | 0 | |
| Feb-12 | -7 | -7.4 | 0 |

Spot Price Performance last week: Mint Product

| Date | Flakes | Peppermint | DMO | Crystal | Powder |
|------------|--------|------------|------|---------|--------|
| 09-12-2011 | 1570 | 1205 | 1090 | 1630 | 1575 |
| 12-12-2011 | 1570 | 1205 | 1090 | 1630 | 1575 |
| 13-12-2011 | 1560 | 1195 | 1080 | 1620 | 1565 |
| 14-12-2011 | 1560 | 1195 | 1080 | 1620 | 1565 |
| 15-12-2011 | 1555 | 1190 | 1075 | 1615 | 1560 |
| 16-12-2011 | 1550 | 1190 | 1070 | 1610 | 1555 |

Mentha Oil Weekly



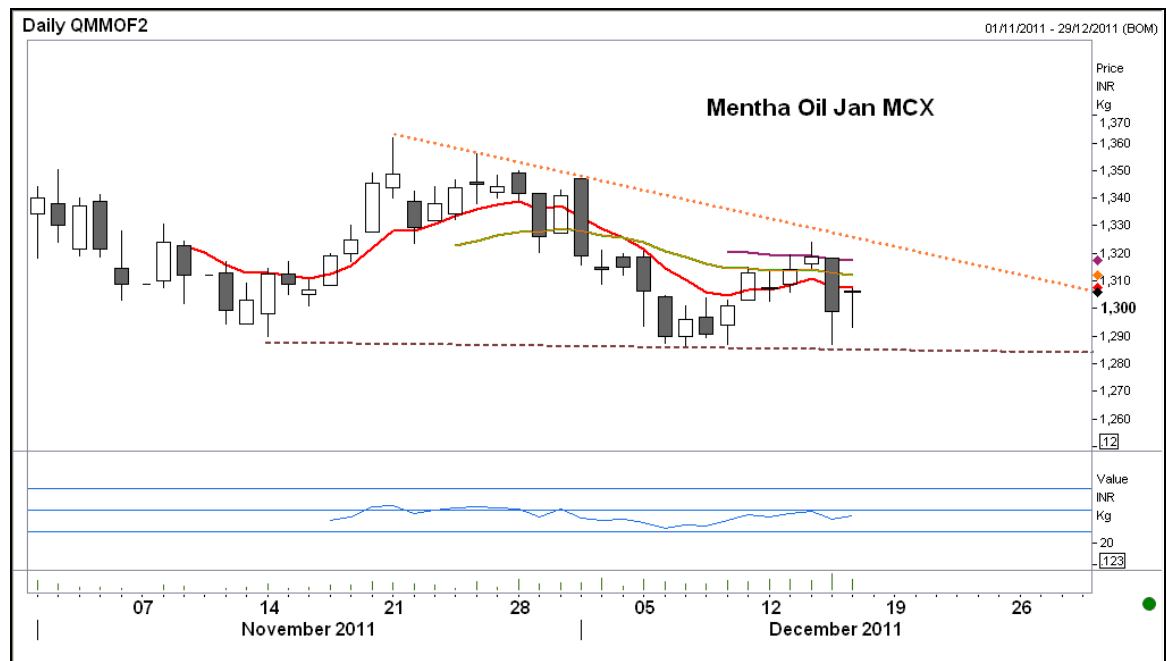
Pivot Table

| Exchange | Contract | S3 | S2 | S1 | Previous close | R1 | R2 | R3 |
|----------|----------|------|------|------|----------------|------|------|------|
| NCDEX | Dec-11 | 1245 | 1266 | 1288 | 1311 | 1332 | 1352 | 1375 |
| | Jan-12 | 1254 | 1271 | 1291 | 1311 | 1328 | 1344 | 1365 |
| | Feb-12 | 1258 | 1270 | 1287 | 1304 | 1316 | 1328 | 1345 |

Warehouse stock level in Kgs. (as on 16, December 2011)

| Commodity | Place | Physical Stocks | Demat Stocks | Total Stocks Eligible for Exchange Delivery |
|-------------------|--------------|-----------------|--------------|---|
| Mentha Oil | Chandausi | 46740.1 | 0 | 46740.1 |
| Mentha Oil | Barabanki | 832943.73 | 19085.55 | 852029.275 |
| Mentha Oil | TOTAL | | | 898769.375 |

Technical



Mentha Oil Weekly

To unsubscribe please mail us at commodity@karvy.com

Disclaimer

The report contains the opinions of the author, which are not to be construed as investment advice. The author, directors and other employees of Karvy and its affiliates cannot be held responsible for the accuracy of the information presented herein or for the results of the positions taken based on the opinions expressed above. The above mentioned opinions are based on the information which is believed to be accurate and no assurance can be given for the accuracy of this information. There is risk of loss in trading in derivatives. The author, directors and other employees of Karvy and its affiliates cannot be held responsible for any losses in trading.

Commodity derivatives trading involve substantial risk. The valuation of underlying may fluctuate, and as a result, clients may lose entire of their original investment. In no event should the content of this research report be construed as an express or an implied promise, guarantee or implication by or from Karvy Comtrade that you will profit or that losses can or will be limited in any manner whatsoever. Past results are no indication of future performance. Information provided on this report is intended solely for informative purposes and is obtained from sources believed to be reliable. Information is in no way guaranteed. No guarantee of any kind is implied or possible where projections of future conditions are attempted.

We do not offer any sort of portfolio advisory, portfolio management or investment advisory services. The reports are only for information purpose and not to be construed as investment advices.

For Detailed disclaimer please go to following URL's:

<http://www.karvycomtrade.com/disclaimer.asp>

<http://www.karvycomtrade.com/riskDisclaimer.asp>

